

E3 Gate valve | Combi valves



Overview

Design features

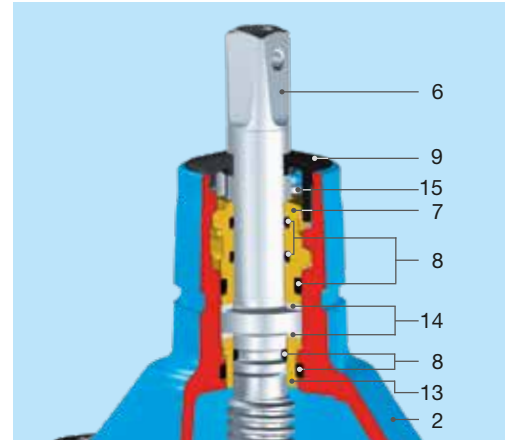
- Resilient seated gate valve according to EN 1171, EN 1074-1 and EN 1074-2 with smooth, straight-through bore
- Double bayonet O-ring carrier is connecting the spindle to the bonnet, allowing a fully encased, uniform epoxy powder coated bonnet for further improved corrosion protection
- Wedge guide made of wear resistant POM material in load optimized design minimizes attrition and ensures lowest torque actuation
- Wedge is flexible and fully linked in vulcanized elastomer to the wedge nut. This snug fit dampens vibration during opening and closing of the wedge
- Wedge nut has a long thread length allowing significantly higher torques than the standard before breaking
- O-rings, lip-seals mounted in the bonnet are replaceable under operating pressure
- Extended edge protection to avoid damages during transport, storage and assembly
- Sliding disks and ball bearing assure low friction performance of the spindle
- 100% suitable for buried installations

Material | Technical features

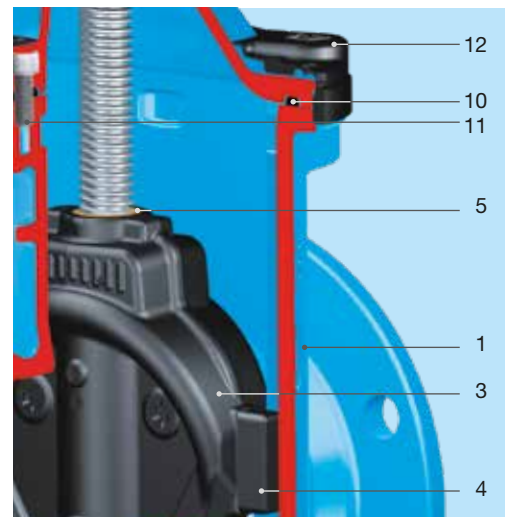
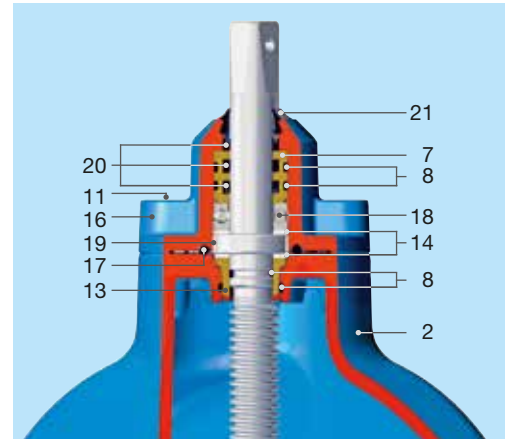
- 1,2 Body (1), bonnet (2), centering flange (16) made of ductile iron, epoxy powder coated inside and out
- 3 Wedge made of ductile iron (DN 50 made of dezincification-resistant brass) with vulcanized elastomer all-over
- 4 Wedge guide made of wear-resistant plastic
- 5 Wedge nut made of dezincification-resistant brass
- 6 Duplex stainless steel spindle with rolled thread and flat-rolled anti-friction surface
- 7 O-ring carrier made of brass, DN 50 – 200 with double bayonet
- 8 O-rings made of elastomer
- 9 Wiper ring made of PE
- 10 Bonnet gasket made of elastomer
- 11 Allen screws made of stainless steel, encased into the body with interlacing gasket and sealing compounds, ensuring full corrosion protection
- 12 Extended edge protection made of PE
- 13 Spindle bearing made of dezincification resistant brass
- 14 Sliding disks made of POM
- 15 Safety screw made of stainless steel
- 17 Centering flange gasket made of elastomer
- 18 Axial ball bearing permanently lubricated
- 19 Centering ring made of POM
- 20 Lip seals made of elastomer
- 21 Wiper ring made of elastomer

DN 50 – 200

Spindle bearing with sliding disks



DN 250 – 400 Spindle bearing with ball bearing and additional sliding disks



DN 500 – 600 in preparation - currently available - see page A 11/3

E3 Combi-T

Flange T-piece with integrated E3-valve, PN 10 | PN 16

Design features

- Resilient seated gate valve combined with flange T-piece
- Short style, equal and reduced
- Space saving installation through short design as well as savings in material, work, transport and storage costs
- The compact design enables the valve chamber to be made from sectional concrete giving typical savings of 25 % in chamber construction costs
- A combination of E3 Combi-T with E3 reducing valve creates a multitude of application possibilities
- Flanges sized in accordance with EN 1092-2, drilled according to EN 1092-2 | PN 10 standard; EN 1092-2 | PN 16 DN 200 please specify on order - other standards on request
- Suitable for cleaning with a cleaning pig
- One extension spindle for several dimensions
- Suitable for operation by automatic actuators
- Easy retrofitting of position indicator and automatic actuators on the standard bonnet
- Duplex stainless steel spindle

Standard version: without handwheel and extension spindle

Special versions: on request

No. 4340E3



Suitable accessories

Suitable accessories: see page A 2/2

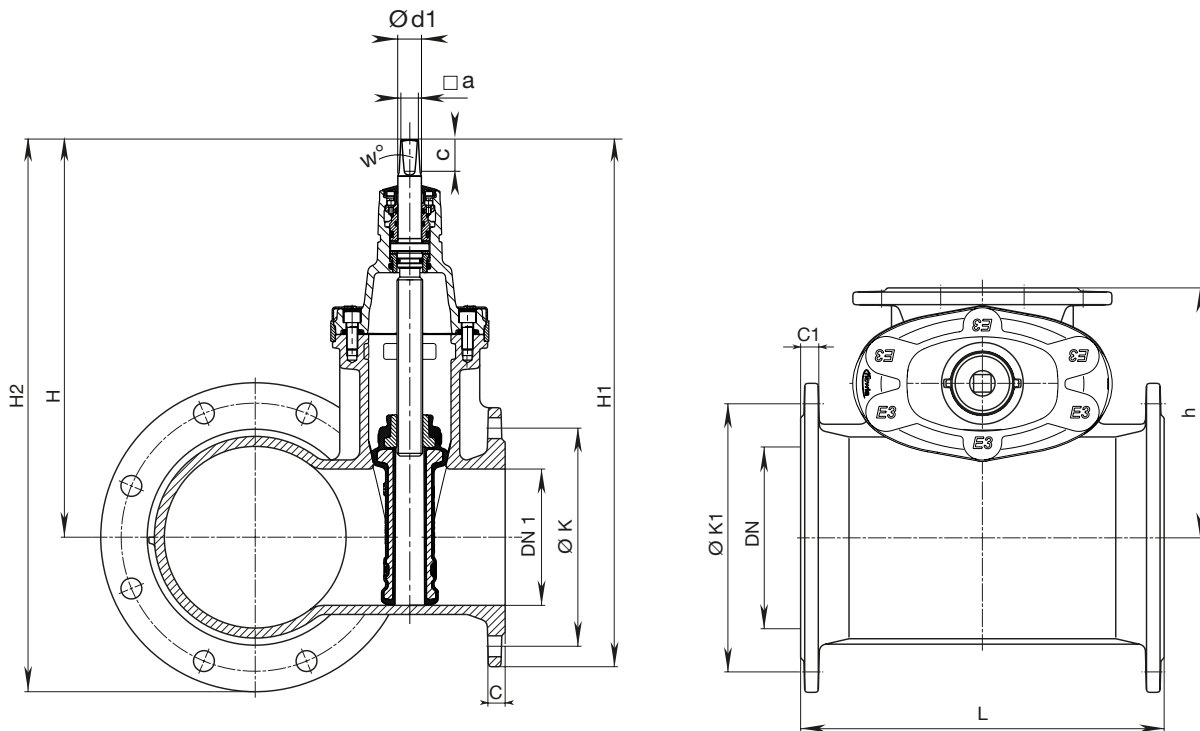
Handwheel:		No. 7800
Extension spindles:	rigid	No. 9000E2/E3
	telescopic	No. 9500E2/E3
Surface boxes:	rigid	No. 1750
	telescopic	No. 2050, No. 2051K
Valve actuator:		No. 9920
Adapter for actuator (E2/E3 adapter):		No. 8630E2/E3
Base plate:		No. 3481, No. 3482
Operating cap:		No. 2156, No. 2157
Extension spindle:		No. 7820, No. 7825
Position indicator:		No. 2170E2/E3
Bolts:		No. 8810, No. 8830, No. 8840
Flat gasket:		No. 3390, No. 3470
HAWAK-pillar:		No. 9894, No. 9895

Order no.	MOP (PN)	Dimensions DN	Valve DN1				
			65	80	100	150	200
4340E3	16	80					
		100					
		125					
		150					
		200					

E3 Combi-T

Flange T-piece with integrated E3-valve, PN 10 | PN 16

No. 4340E3



DN	DN 1 Valve	E3 Combi-T					Flange				Spindle				Weight
		L	H	H1	H2	h	Ø K	C	Ø K1	C1	□ a	c	w°	Ø d1	
80	80	280	313	413	413	170	160	19	160	19	17,3	33,8	3°	24	24,0
100	65	260	305	397	408	180	145	19	180	19	17,3	33,8		24	29,5
100	80	280	313	413	416	200	160	19	180	19	17,3	33,8		24	30,0
100	100	310	343	453	453	200	180	19	180	19	19,3	37,2		24	34,0
125	80	280	313	413	432	200	160	19	210	19	17,3	33,8		24	30,5
125	100	310	343	453	469	215	180	19	210	19	19,3	37,2		24	36,5
150	65	260	305	397	441	210	145	19	240	19	17,3	33,8		24	33,0
150	80	280	313	413	444	220	160	19	240	19	17,3	33,8		24	36,0
150	100	310	343	453	487	220	180	19	240	19	19,3	37,2		24	40,5
150	150	400	433	576	576	250	240	19	240	19	19,3	34,9		26	55,5
200	80	280	313	413	484	250	160	19	295	20	17,3	33,8		24	43,0
200	100	310	343	453	521	250	180	19	295	20	19,3	37,2		24	49,5
200	150	400	433	576	610	275	240	19	295	20	19,3	34,9	26	68,5	
200	200	460	541	711	711	295	295	20	295	20	24,3	48	30	90,0	