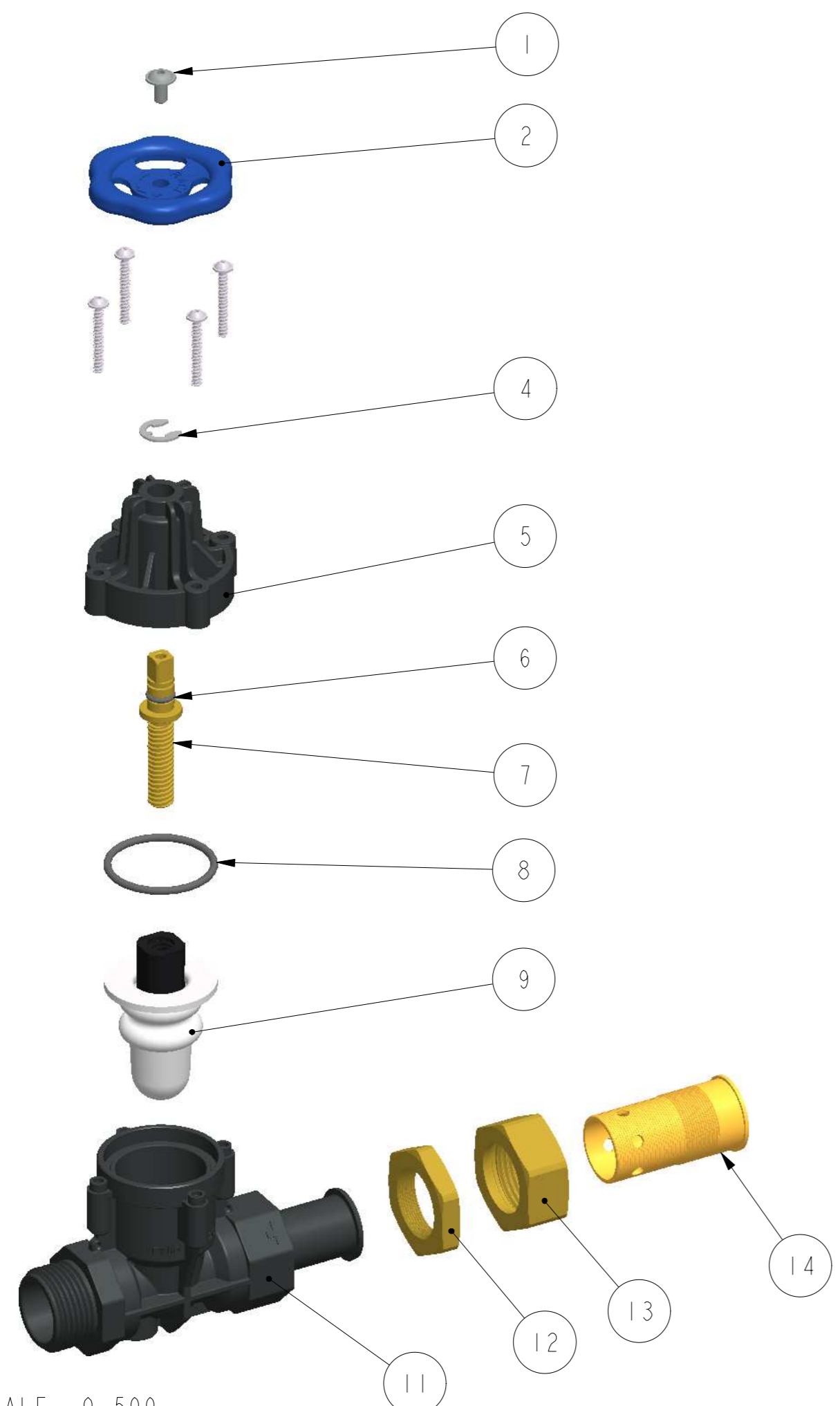


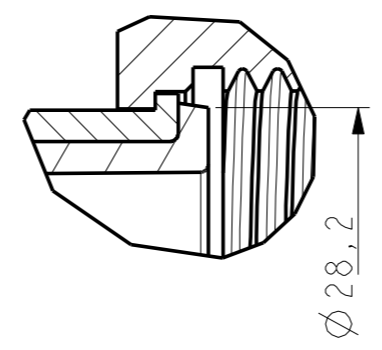
THIS DRAWING IS NOT TO BE USED FOR MANUFACTURING PURPOSES NOR THE INFORMATION THEREIN CONTAINED DISCLOSED, WITHOUT WRITTEN PERMISSION OF THE OWNER

	DESCRIPTION	PART NUMBER	REVISION	MATERIAL TYPE	MATERIAL	QTY
1	M5x10			STAINLESS STEEL	A2	1
2	HANDWHEEL SMALL 8x8	P-11-020	R02	COMPOSITE	PA6 GF30 BLUE	1
3	EJOT DELTA PT 40x30	DELTA PT 40x30		STAINLESS STEEL	AISI 304	4
4	CIRCLIPS d8	DIN6799 d8	R00	STAINLESS STEEL	A2	1
5	CAP HK D20	P-10-020	R02	COMPOSITE	RACI-PLAST GF60	1
6	O-RING 7.5x2	7.5x2	-	RUBBER	NBR	1
7	SPINDLE HK D20 CS	P-13-002	R03	BRASS	CuZn40Pb2	1
8	O-RING 38x3	38x3	-	RUBBER	NBR	1
9	MEMBRANE ASM HK D20 CS	A-12-016	R01	ASSEMBLY	N/A	1
11	BODY D20 HK SVW OVERMOLD	PMT3-045	R00	COMPOSITE	RACI-PLAST GF60	1
12	COUNTERSCREW 41 M27.8x1	P-12-006	R00	BRASS	CuZn40Pb2	1
13	LOOSE NUT OVERMOLD	P-12-008	R00	BRASS	CuZn40Pb2	1
14	SLEEVE SVW OVERMOLD	P-12-007	R01	BRASS	CuZn40Pb2	1

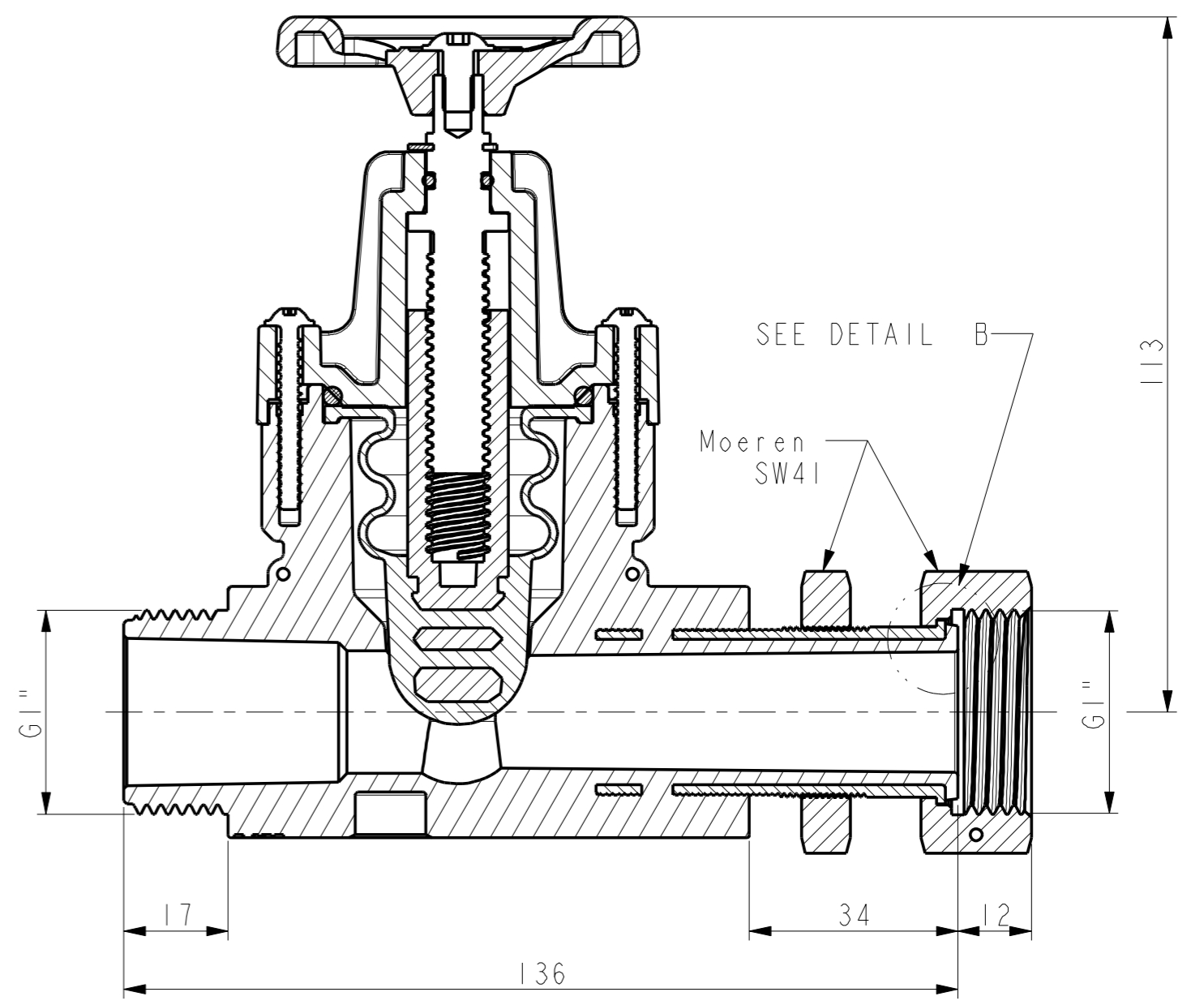


SCALE 0,500

DETAIL B
SCALE 2,000



LADINGSVERLIES BIJ 5m³/h <0.18 Bar



Modification		EO nr.	Init.	Change
Mode: HK_WATERLINK_OVERMOLD_PMT	Material: N/A	Title: HYDRO-KONEKT Pb-free HYDRO-KONEKT OVERMOLD PMT		
Unless otherwise stated general tol. ±0.1mm angle tol. ±1°	Thickness	Drawn: 26/10/20	HK HYDROKO	
Unless otherwise stated general finish	Finish	Init. BDW	Part Code: HKD20-0060	Drawing number: A-13-030
Format: A2	Scale: 1,0	Sheet: 1/3	Change: R00	
Superseded by		Drawing file: HK_WATERLINK_OVERMOLD_PMT		