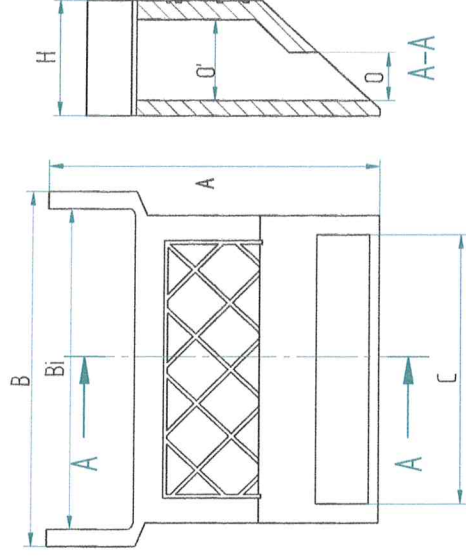
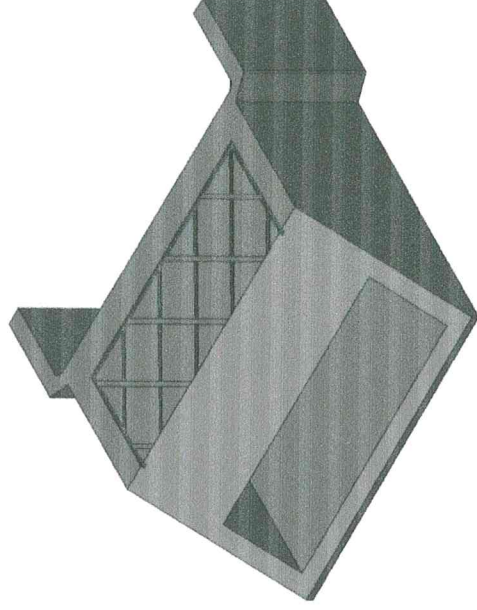


## Tête de Gargouille plate



CODE	A	H	B	Bi	C	O'	O	POIDS
012790	170	60	185	165	140	42	25	3.5

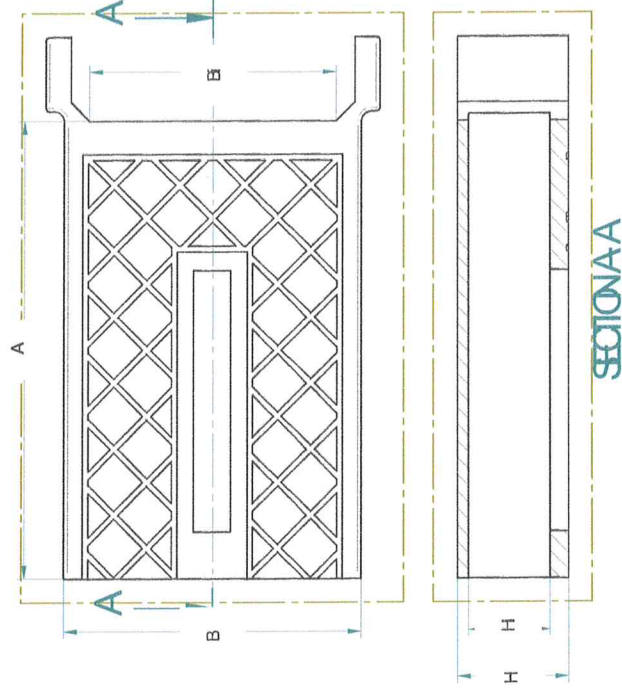
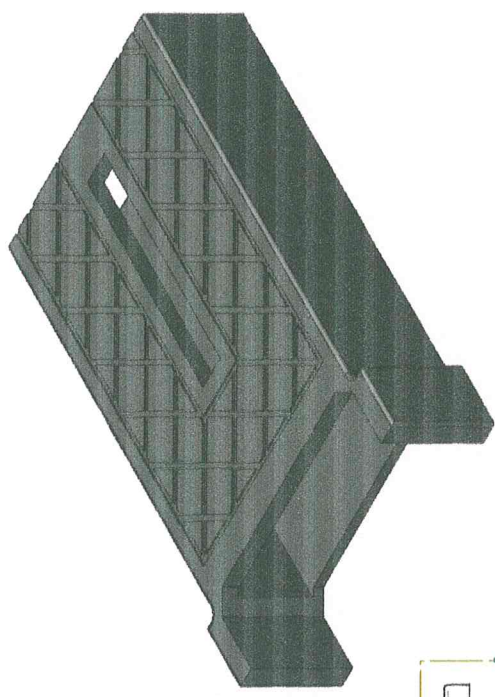
**SERIE :**

- ✓ Matériau fonte EN-GJS-500-7
- ✓ Revêtement bitumineux

**OPTION :**

- ✓ Marquage à la demande

# GARGOUILLE PLANE



MODELE	CODE	A	H	Hi	B	Bi	POIDS
PLATE	01065020	250	60	40	160	145	5.5
PLATE	01063810	500	60	40	160	145	12
PLATE	01065060	1000	60	40	160	145	29

**SERIE :**

- ✓ Matériau fonte EN-GJS-500-7
- ✓ Revêtement bitumineux

**OPTION :**

- ✓ Marquage à la demande
- ✓ Avec ou sans fente

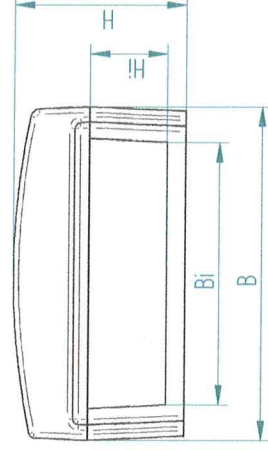
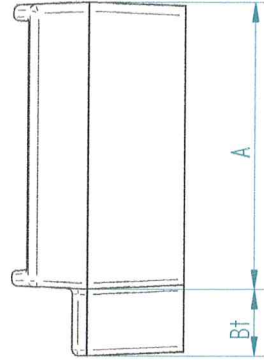
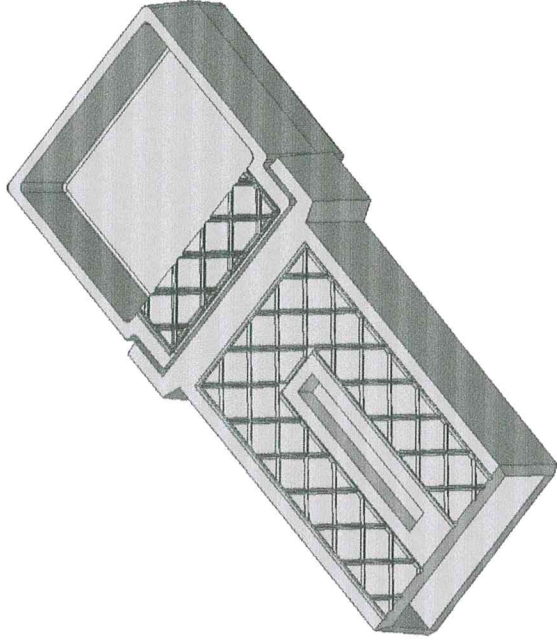
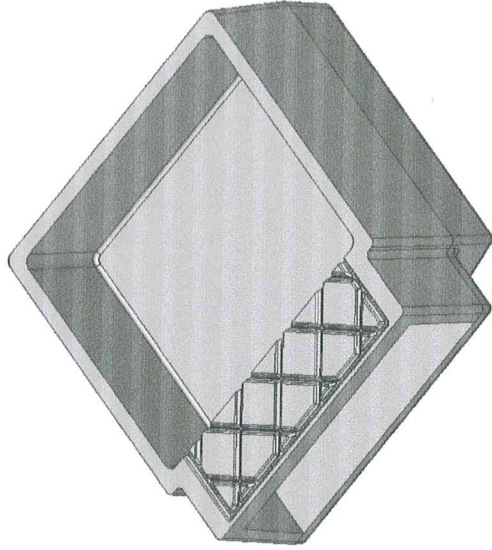
INDICE : 2

03 FEVRIER 2016

REDACTEUR : AIT

VISA :

### SABOT DE GARGOUILLE PLATE



CODE	A	H	Hi	B	Bi	Bt
01070549	155	90	40	180	140	36

**SERIE :**  
✓ Matériau fonte EN-GJS-500-7  
✓ Peinture hydrosoluble

Tolérance dimensionnelle  
ISO 8062-3  
DCTG12